

# YSTRADGYNLAIS

RURAL DISTRICT • BRECKNOCK



The Official Guide



# GLENDALE BAKERIES

## OUR SPECIALITY "GLEN-DAILY" BREAD

*(Sliced and Wrapped and delivered to any part of the district daily)*

## BRIDAL & BIRTHDAY CAKES

*Made at short notice, at reasonable prices*

## Try our SLAB CAKE

*(Cherry, Seed, Madeira, Genoa, Rice and Rich Fruit—Cream Layer and Coconut)*

## SNOW CAKES

*Jam and Cream Sponges and Swiss Rolls*

## MEAT PIES CORNISH PASTIES AND SAUSAGE ROLLS

A WIDE SELECTION OF HIGH CLASS  
CAKES AND PASTRIES MADE DAILY

NUTREX Bread  
PROCEA Bread and  
PROCEA FRUIT Loaves

*All made at our modern machine Bakeries, where only the best ingredients are used under the latest hygienic methods of baking*

*You can visit our bakery and see for yourself*

Offices & Bakeries:

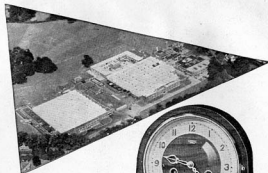
**YNISCEDWYN ROAD, YSTRADGYNLAIS**

Telephone: GLANTAWE 2255

Branch Shop:

**5 PENTREPOETH ROAD, MORRISTON**

Telephone: MORRISTON 71839



*Here  
in Ystradgynlais  
is the home of the  
world famous*

# SMITHS

STRIKE  
AND CHIME  
CLOCKS  
AND  
*Empire*  
WATCHES



SMITHS ENGLISH CLOCKS LTD. LONDON, N.W.2  
*The Clock & Watch Division of S. Smith & Sons (England) Ltd.*

## How are YOUR brakes?

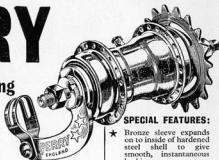
# PERRY

**internal expanding**

## COASTER

# HUB

## BRAKE



**SPECIAL FEATURES:**

- ★ Bronze sleeve expands on to inside of hardened steel shell to give smooth, instantaneous braking.
- ★ Precision-engineered from highest-grade materials.
- ★ Efficiency and reliability proved under severest tests.
- ★ Brake surface totally enclosed, giving complete protection against dust and grime.
- ★ Frictionless and silent: Freewheel.

PERRY spells safety for cyclists! Every day more and more rely on the Perry Coaster Brake to bring them to a smooth, steady stop, whatever the weather, whatever the road-surface. Can be fitted easily, quickly and cheaply to your pedal-operated or motorised cycle. *See your local dealer to-day!*

PERRY CHAIN COMPANY LTD., TYSELEY, BIRMINGHAM

# YSTRADGYNLAIS

## THE GATEWAY

TO

THE SEA, THE TOWN AND THE COUNTRYSIDE



SECOND EDITION

Designed and Published by  
THE HOME PUBLISHING CO.  
(Property Publications Ltd.)  
66/78, North End, Croydon

for

THE YSTRADGYNLAIS RURAL DISTRICT COUNCIL.

No.

OY/2/4601/K/45



GORSEDD CIRCLE

*Photo by T. J. Davies*

## THE NATIONAL EISTEDDFOD

The competition amongst Welsh townships for the honour to accommodate the Royal Welsh National Eisteddfod is always a keen one, and in 1954 this honour falls on Ystradgynlais. The vast pavilion has been built on the green alluvial floor of the Valley, surrounded by mountains on all sides, with the exception of the South Western, where is situated the narrow gap through which the River Tawe flows towards the Bristol Channel.

The Eisteddfod is an unique Welsh institution, with its remote origins dating back to those early centuries when Welsh literary culture was paramount in the British Isles. The institution is essentially of the people, and it provides them with the platform upon which expression can be given to the literary, musical and other artistic aspirations of the nation. Here the bards assemble to crown and chair the laurel winners for the year; here the great choirs mass to sing the world's greatest musical masterpieces, and here, too, individualism gets its full opportunity in the innumerable competitions in all the fields of art and craft.

Playing its part along with the Eisteddfod is the Gorsedd, or the assembly of the Bards of the Isle of Britain, with all its rites and pageantry, and although the institution is of a recent origin it certainly adds colour and charm to the week's proceedings.

Whoever comes to Ystradgynlais for the 1954 Eisteddfod will certainly have a feast for the eyes, the ears and also for those higher artistic senses, the full development of which is surely one of the major aims of civilisation itself.



# HERE WE LIVE

We are the people of Ystradgynlais and District. We live on the South-Western borders of Breconshire in the Tawe Valley, or, as some people would prefer, "The Swansea Valley." Perhaps it is easier to say that way.

We occupy some 22,000 gorgeous acres of the upper part of the valley and we claim, much to the good-natured chagrin of our neighbours, that these are by far the finest acres in the whole of the valley. The majority of them constitute a part of the National Park.

There are about 12,000 of us, and we live mainly in four large hamlets and a few smaller ones. Ystradgynlais is the largest and the centre for business. Abercrave, Cwmtwrch, and Colbren follow in size in that order.

Nature has been kind to us and has endowed us with many things besides beautiful surroundings. We are sheltered from the North and the East winds by two noble ranges of highlands—the Black Mountains on the one side and the Breconshire Beacons on the other, and these keep the chill out. We also derive the benefits of the warmth brought up this splendid valley by the gentle Atlantic winds after parting company with the Gulf Stream.

In that favoured way we are tucked in snugly in a near pear-shaped hollow at altitudes ranging from 300 to 800 feet above sea-level.

We are proud of our bright and well-kept homes which are mostly owned by the people who live in them. For those not in this category, the extensive Housing Schemes erected in central and healthy positions and which are expanding at a fast rate, will soon give every family who need a home accommodation in one of these fine houses.

We have excellent shopping and other facilities, and although we do not boast of any large hotels we have, on the other hand, some very good hosteleries where the accommodation, food and cooking is of a very high standard.



CWMWAUNFAEN

If, as yet, you have not had the good fortune of tasting some of the delicious Welsh dishes, then at these places you have a treat in store. The proverbial Welsh "Cawl," or eggs with Welsh cured ham and Welsh cakes to follow, are just a few of the delicacies we specialize in around here and with which you do not meet with in other parts of the world.

# HEREABOUTS

Our neighbours are all excellent people. They are easily accessible, and every journey undertaken outside our own area should be a pleasurable one.

Swansea is but 14 miles away, and the delectable Gower Coast is just a few miles more, with a good bus service all the way. If you have a car you might like to go further afield. Then it is a very fine run across the Black Mountains, climbing over easy gradients and on a very good road to a height of 2,000 feet above sea-level to behold a most marvellous and extensive panoramic view of the beautiful countryside below—a sight not easily forgotten. Proceeding down the other side you will come to Llandovery—an ancient and historic Borough, with, so it is said, a pub to every 70 of its 2,000 inhabitants. After a nice cup of tea here you can take a short-cut back home through Sennybridge, or if the mood moves you, make a wider detour and take in the two spas, Llanwrtyd and Builth Wells, before returning home through Brecon.

One of the advantages of Ystradgynlais as a centre is that there are so many exits and accesses that every trip can be made a circular one, a mysterious one at that, and no one but yourself need know where you are heading for or where you have come from. There is one such route through the beautiful Vale of Neath, which can land you either on the Brecon Beacons or in Cardiff, depending on which turning you take at Hirwaun. You return on different roads. And by the way, Brecon Beacons—what Beacons! There are four of them—Corn Du, Penylan, Crubyn and Fan-Big, everlastingly standing guard like sentinels over that fine and ancient Borough of Brecon. This quaint and grand old county town is worth all this guarding.

Then there are Neath, Merthyr, Aberdare, the Rhondda, Porthcawl and many more, all sizeable towns, all within pleasant running distances and, above all, all good neighbours.



TRIUMPH POCKET WATCH



TRIUMPH WRIST WATCH

**Ingersoll watches are  
made at Ystradgynlais!**

THE skill and craftsmanship of Welsh men and women goes into the making of fine Ingersoll timekeepers. The village of Ystradgynlais, where the pocket and wrist watches of the famous Triumph series are made, is becoming a new focus for one of the world's most exacting engineering achievements . . . *the measurement of time.*

# INGERSOLL

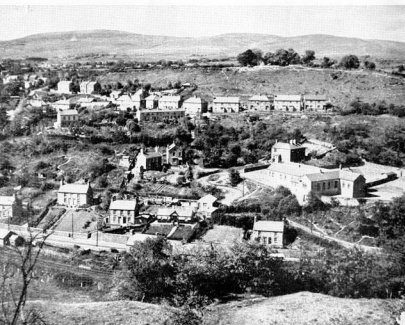
***the RIGHT TIME to buy - and to give!***

INGERSOLL LIMITED · THE ANGLO-CELTIC WATCH  
FACTORY · YSTRADGYNLAIS · SOUTH WALES

# HERE IN THE VALLEY

Most strangers have a little difficulty at first in pronouncing the name of our central town, and occasionally it is made the reason for a little good-natured mirth. It has been called by many names, but the one that appeals most of all to us is "Just a Guinness." We can't really condone even that one, so we would prefer that you get it properly from the commencement. This is not the place for a Welsh lesson, but if you will only change the Welsh "Y" for the English "U" you will then get Us-trad-gun-lais, and that is just how it should be pronounced. We anticipate your first question, though—what on earth does it mean? It has been asked thousands of times before, but the answer to that poser is a long story.

TRIO'RGLIEN, CWMTRWRCH



Briefly it is said to mean the "Estate of Cynlais." And again, who was Cynlais? He was a man who afterwards became a Saint, but before that he was a ruler of this region and acquired the estate through marriage. He died in one of the local caves in A.D. 527. We, ourselves, wonder however, whether his bones were not amongst a recent well-preserved collection found there and now reposing at the National Museum of Wales. Ystradgynlais is the hub of this district, and all the administrative offices are located here. It has a little bustle peculiarly its own. Actually, it is very easy to reach by car or by bus. It is a good centre for jaunts since four roads lead away from this place to many beautiful and varying landscapes. To those of you who travel without a car, good and very frequent bus services will take you anywhere you want to go and, we hope, bring you back again.

We have no particular main streets, all our streets are main ones and they are known as Brecon Road, Station Road, Commercial Street and Church Street. They all lead to some very fine and interesting places.

Brecon Road goes on past the Welfare Hall and Institute, a splendid building which is the cultural centre of the town. The studious as well as the playful type are catered for in this Institute. During the proper season one may enjoy Operas, Dramas and Concerts, etc., given by our own amateurs of an unbelievably high standard for a town of this size, and if you desire a seat at one of these entertainments you will be well advised to make a reservation in advance, for patrons come from far and near.

Most towns boast of a Cinema. Well, we have two, and both are good and comply with the Fire Services Safety Regulation.

Of Churches, we have quite a few, presumably because we are such a good people. The oldest, of course, is the Parish Church, named after St. Cynlais. Most of the free churches are also represented here, too, some by large and imposing buildings and some not so large. You need, therefore, have no qualms of not having the religious and moral side of you well looked after.

We have, as well, lots of other interesting Institutions which cater for man's needs in divers ways.

The story of our countryside must rightly start with Cwmtwrch. It is a long, winding village, so long that it has to be known as either the Upper or the Lower. It does not entirely belong to our County. It is shared also by the Counties of Glamorgan and Carmarthen. It is so narrow that your first impression is that the River (Twrch), the Railway and the Highway are for ever contesting for possession. They zig-zag over each other, and have no respect whatsoever for the poor County boundary. Thus, they run for about two miles until they part company near the George IV Inn, when each goes its own independent way. If you must follow one or the other, then we suggest a tramp up on the banks of the cascading river. It abounds with fine trout, and if you follow it far enough you will pass a noted picnic rendezvous at Ffrydiau Twrch and eventually arrive at one of the Van Lakes (Llynfan Fach) — a most magnificent spectacle. Returning over the eight or so miles you have traversed you might well feel, as did King George IV before you, and make a call at the pub to which he gave his name, or one of the other similar establishments in the vicinity. Maybe, however, you would prefer to proceed a little further down the valley and try the waters of the Sulphur Spring. It is not very nice to the palate, but the Spring itself has a far and wide reputation for its curative properties. Hence Cwmtwrch (Valley of the Wild Boar) enjoys a large clientele of its own.

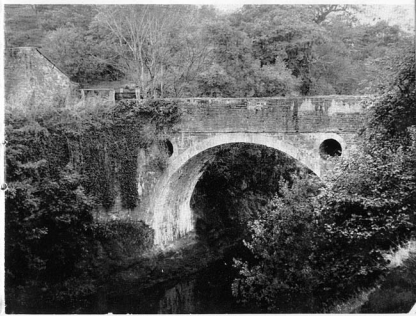
Moving along through two pleasant little hamlets, Gurnos (Night Fold) and Glanrhyd (Near the Ford), we arrive back in Ystradgynlais and turn left into Cwmgiedd. This is a pretty little dingle, very wooded in its upper reaches and sometimes known as Swiss Valley. Here we find the Yorath Methodist Chapel, the present one, however, being the third building, a very old and well-known place of worship, and occasionally also known as the Mother of Chapels. Around the chapel there have been nurtured eminent men of letters with a national reputation, and of whom the local inhabitants refer to in conversation with considerable reverence.

Here, too, from the resemblance of Cwmgiedd to the stricken village of Lidice in Czechoslovakia, the documentary film, "The Silent Village," was taken. A large number of the local people, almost unknowingly to themselves, became film stars at short notice, showing on theatrical screens all over the country.

Returning and moving up Brecon Road we pass on the left the Castle Hotel, where one of Madame Patti's oak beds is still in use, alas, not by her, but by visitors like yourself. Up again and on our right across the river, we come to the Lamb and Flag Inn, the reputed shelter for a night for Oliver Cromwell. Following the path past this house we come to the round house, now used as a farm building, but, nevertheless, interesting and unique in its construction.

Retracing our steps we proceed along to Abercrave (Aber-Mouth, Craf-Welsh Garlic). Here we have another cinema, a Welfare Hall, a very nice and well-kept church and more

PONT-Y-YARD, ABERCRAVE



chapels. The geological formation begins to change here and with that the scenery too.

Turning right at Abercrave we proceed to Colbren. Alongside this village passes a Roman Road (Sarn Helen). Colbren, however, is noted chiefly for a very fine falls (Scwd yr Henryd) in the River Llech, now the property of the National Trust. It has a drop of over 100 feet and the falling waters can be heard for long distances when in flood. Only the young and the daring should try to descend to the bottom of the falls. The climb back again is a very difficult one.

Turning left at Colbren, and traversing about a mile and a half over undulating country of truly romantic rural beauty, with magnificent views from several vantage points, we arrive back on the Brecon Road near to the Penycae Inn in Penycae Village. Moving quietly up the valley we automatically feel an awareness of the majestic surroundings. Just around a bend in the road we take a first glimpse of Craig-y-Nos (The Rock of the Night) Castle, the home for about forty years of the beautiful, lavishly wealthy, three-times-married Primadonna, Madame Adelina Patti, who lived there in regal splendour. At this point a little trip down the side road and up the far side of the river towards Penwyllt will give us a full view of the Castle and its setting, beautifully situated on the turn of the river. If this elegant picture does not momentarily catch your breath you are likely, so the saying goes, to go on breathing to a very ripe old age.

Penwyllt has an altitude of nearly 1,000 feet above sea-level, virtually on top of the mountain, and is complete with its own Works (Quarrying), Post Office and Railway Station. We have, however, a suspicion that Madame had something to do in the providing of that station. We know that she did, in fact, build the road to it. She had important friends, including Royalty, and probably that may be the answer. From here, too, she made her one last sad journey. Her cortege was borne by a special train *en route* for Paris, where she was interred. The Castle itself is now used as a hospital, but it still retains its old characteristics. One of its novel

features is the Theatre, a miniature in great detail of Drury Lane, which she loved most of all the theatres with which she was connected.

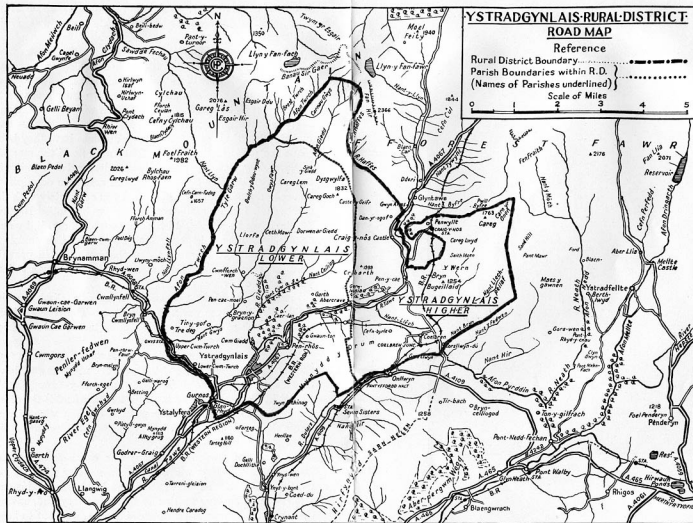
Returning to the highway and skirting the Castle we arrive at the Gwyn Arms—a noted fishing hostelry. From here we may have the pleasure of watching a train laboriously chugging its way up the mountain on one of the two daily journeys to Brecon. It returns that way a little later with the brakes on!

Hereabouts now, are the noted Danyrogof Caves you have probably heard about. Only in recent times have they been made accessible to the public. They are one of the marvels of Nature's work. The coloured stalactites and stalagmites in these very extensive caves are beyond adequate description, and only a personal visit will reward you completely with the spectacle designed for your bewildered eyes by Mother Nature. All the caves have not yet been fully explored and if, by any chance, you have a bent for such adventure, there exists a Caving Club which, during the proper season, will provide you with plenty of hazardous work and thrills enough to last you all the other seasons.

From here, and for the energetic only, a climb up the Cribbarth above the caves is suggested. The scenery from up above will satisfy the most exacting tastes and for sheer wild glory—unbeatable anywhere.

Not far away from here, too, and still on the mountain top, the antiquary can also satisfy his natural curiosities and delve into his delights at the stone circle and Bedd-y-Cawr (Giant's Grave) in the form of a cairn. Still further afield is the other Van Lake, the large one, a popular attraction with hikers. Those who can make it will be amply rewarded by the lovely mountainous surroundings.

We shall not always accompany you on these excursions into the wilds, so you will please choose a day with a good weather forecast. These beautiful and lovely mountains can also prove to be very unfriendly to the unwary and, having by now, we hope, made you a friend of ours, we want to keep you unharmed.



THE HORN PUBLISHING CO

Based upon the Ordnance Survey Map with the sanction of the Controller of H.M. Stationery Office

Crown Copyright Reserved.



THE CANAL FROM GIEDD BRIDGE

## HERE WE PLAY

What do you do on a fine day around here? There are some beautiful walks for both young and the old. Lots of folk like to romanticise on the Canal Walks and other places, or, for a change, take a stroll up the Park.

Others like to play golf, bowls or tennis.

And what do you do on a wet day? Why, the sensible thing is to go fishing for trout on the River Tawe. Angling, although not always productive, may also be a little damp. Nevertheless, it is recommended for complete relaxation. Should the spirits also be damped by the day's results, then there are, at convenient spots along and quite near to the ten miles or so of river, hostelrys where the good host knows exactly what is good for you. He might even promise you a good basket on the next occasion, but by pre-arrangement, of course!

Would-be anglers, to save themselves from trouble are, however, advised to write for the rules to the Secretary of the Angling Association beforehand.

It is, therefore, correct to say that Ystradgynlais can provide almost everything for those who love sport, including rugby union, rugby league and soccer.

The Palleg nine-hole Golf Course is a good place to play and to see some more magnificent views and, of course, there is always the attractive tenth-hole.

At the moment the Children's Playgrounds, Tennis Courts and Bowling Greens are the property of the Miners' Welfare Committee, but visitors are always made welcome by the Committee.

## HERE WE TOIL

You may say you get plenty of window gazing in your home-town—but you'll discover that at least the ladies of your party love looking at shops away from where they live all the year round.

The local shops are self-sufficient ; they are bright and well stocked with first-class bakery goods and many other excellent things besides.

*As for Industries . . .* At the beginning of the nineteenth century it was a very important centre for the production of iron, but it's a long time since they turned out any iron. Then it became an important centre of the coal and tinplate industries. Now the tinplates have gone, but we still have the collieries. Not so many by a long way now as, say, 20 years ago, but three have survived to this day. They turn out some of the best grades of Anthracite in the coalfield, but at a price in human lives and human sufferings. These casualties are pretty heavy.

Then, since the war, and with the whole-hearted co-operation of our friends from over the Welsh border, and also the Government, we have acquired something entirely novel and new to this part of the country—Light Engineering Industries. These factories are impressive and planned with thoughtful care to preserve the amenities (official phrase !) of this beautiful district. Now they turn out watches and clocks by the thousands week in week out, and you will probably see these at your own jeweller wherever your home-town may be, whether in this country or abroad. The surprising thing about them is that the whole of the labour force engaged, excepting a handful of experts, is made up of our own local people who have acquired with remarkable speed the knowledge, the nimbleness, and the technique in this highly-skilled precision work.

Another large and very fine factory is engaged entirely in the mass production of cycle hubs, also in large quantities, and which are again distributed over many parts of the world.

The Companies concerned are always most obliging and co-operative in arranging conducted, organized parties around



SCWD-YR-HENRHYD, COELBREN

the works. After one of these inspections, you will be impressed at the dexterity of the operatives and the almost luxurious set-up of the organization which turns out such fine work.

An industry that gained considerable momentum just before the war was Tourism, and figured then to become a major one. The opening of the Danyrogof Caves to the public brought in many thousands of delighted sightseers, and it is hoped that before long that this industry will be renewed to our mutual advantage.



THE CROSS, AND

THE RIVER TAFE AT YSTRADGYNLAIS



## HERE'S our WELCOME

We end as we started. A warm welcome to all who care to come to these hillsides for a short or a long stay. You will find us courteous and helpful, and anxious at all times to make you as comfortable as is humanly possible with good fare and good service.

*The Chairman and Members of the  
Rural District Council of Ystradgynlais.*

*March, 1954.*

*Whilst every care has been taken in compiling this guide, and the statements contained herein are believed to be correct, the Publishers and the Promoters of this publication will not hold themselves responsible for any inaccuracies*

WIND ROAD AND GURNOS, SHOWING THE ENFIELD CLOCK AND THE  
ANGLO-CELTIC WATCH FACTORIES



**"SIOP JIM" The Square, Ystradgynlais**

STATIONERY, TOBACCO and CIGARETTES

Your Agent for:

MECCANO and TRI-ANG TOYS

BRICKPLAYER BUILDING KITS

For Your Delivery of Newspapers

Telephone . . . . . Glantawe 2183



Tel. : Glantawe 3106

**H. C. Gunn & Sons**

Builders  
and  
Contractors

**YSTRADGYNLAIS, SWANSEA**

Painting and Maintenance Contractors

PURCHASE YOUR NEW PARTY DRESS  
BLOUSE, OR DAINTY UNDIES FROM

★ **Jenny's** ★

**Brecon Road, Ystradgynlais**

(Near Astoria Cinema)

**L. O. Francis**

(Late of Ystalyfera)

**Family Butcher**

Daily Deliveries.

Home-made Sausage and Faggots

**Cambrian Terrace, Brecon Road  
YSTRADGYNLAIS**

*SPECIALISTS IN MEN'S, YOUTH'S  
AND BOYS' CLOTHING*

•  
**Spencer Jones**

(Proprietor: E. B. Williams)

•  
*SUITS MADE TO MEASURE  
PROMPT DELIVERY*

•  
*AGENTS FOR NICHOLSON'S AQUATITE  
AND PELTINVAIN RAINCOATS*

**J. Ll. James**

COMPLETE OVERHAULS, REBORES  
CAR SPRAYING, PETROL, OIL, TYRES

**BROOK MOTORS, Caebont, Abercrave**

Tel. Abercrave 279

## **Mrs. M. JONES**

Agent for: PATON & BALDWIN, SIDAR WOOL  
& GOLDEN EAGLE also WELSH WOOLS  
SILKS & COTTONS, etc.

CYNLAIS WOOL SHOP, STATION ROAD,  
YSTRADGYNLAIS

## **HAYDN JONES**

*Newsagent, Stationer and  
Confectioner*

**Brecon Road, ABERCRAVE**  
**SWANSEA, GLAM.**  
Tel. ABERCRAVE 275

## **L. CALLAGHAN**

FRUITERER · SWEETS  
TOBACCO · GROCERY

**T A W E   S T O R E S**  
**CHURCH ROAD · YSTRADGYNLAIS**

## **David John James**

*Grocer and Provision Merchant*

★ Hardware, etc.

**CENTRAL STORES, ABERCRAVE**  
**SWANSEA VALLEY**

## **CORSETRY - Our Speciality**

Specialisation is achieved by meeting all requirements, and the ability to give sound advice in figure control. Our selection of CORSETS · GIRDLES · SUSPENDER BELTS and BRASSIERS have been carefully selected from the leading Ranges of "TWILFIT," "PARTOS," "SILHOUETTE," "AVOR," "LIBERTY," "EXCELSIOR," "FITU," and "LILY OF FRANCE."

Wide variety of Fabrics in popular shades of Peach, White, Blue and Tea Rose.

Also lovely, dainty, NYLON UNDERWEAR by Gossip, and Foster Reid.

**Anvil House · Ystradgynlais**

Telephone : Glantawe 2267

## **DAVIES & THOMAS**

(Proprietors · E. G. Davies and A. I. Thomas)

*Builders, Contractors and Funeral Directors*

"Tan-y-Rhiw," Brecon Rd., Ystradgynlais, Swansea

**Martin L. Cowling** EST. 1895

DRAPERS & OUTFITTERS

Children's wear a Speciality · Sole Agent for Alexon  
Coats & Skirts & Maxton Blouses

**Bradford House, Ystradgynlais**

Telephone :

Glantawe 3231



**T. Evans & Sons**

**Automobile Engineers**

Authorised Morris Agents and Ford Dealers

Reboring and Resleeving

Oxy-Acetylene Welding CARS FOR HIRE

**CENTRAL SERVICE STATION**

**YSTRADGYNLAIS**

SWANSEA

GLAM

**QUALITY . . . SERVICE . . . EXPERIENCE**  
*THESE are the KEY-NOTES of THIS Business*

**Aneurin George** *Builder and Contractor  
Complete Funeral Director*

Offers you a selection of quality . . . Tiled Fireplaces  
Chattanettes, Continuous Burning Fires, Glazed  
Bricks, and all kinds of Building Material from Stock  
at Reasonable Prices !

**Commercial Street, Ystalyfera Phone : Glantawe 2143**

**E. L. WILLIAMS**

**Watchmaker & Jeweller**

BUY YOUR WATCHES, CLOCKS & JEWELLERY, LOCAL  
ALL REPAIRS GUARANTEED  
EAR PIERCING AND EARRINGS A SPECIALITY

**STATION ROAD · YSTRADGYNLAIS**

**D. H. WILLIAMS & SONS**

**General and Furnishing Ironmongers**



**JUST A CHEERY REMINDER !**

We have a varied stock of the following:  
WALLPAPER, PAINTS and DISTEMPERS  
"VALOR" STOVES and COOKERS  
MATTING and FLOOR COVERINGS  
CHINA and GLASSWARE, PRESERVING  
REQUISITES

and everything for the Proud Housewife

**" WE SEEK TO SERVE TO SATISFY "**

**STATION ROAD, YSTRADGYNLAIS**

**SOUTH WALES**

OPEN 8 a.m. to 11.30 p.m.

Teas & Snacks, Ices,  
Confectionery,  
Cigs, Tobacco



**Ann's Pantry** *Proprietor: R. A. Powell*

**THE CROSS  
YSTRADGYNLAIS**

## JAMES

*for Shoes !*

Specialists in Branded Footwear, Lotus, Delta,  
Clark's, Moccasin, John White; also Cotton  
Oxford Sportswear

3 Peglers Buildings, YSTRADGYNLAIS, Swansea



## E. J. PERKINS

*Say it with Flowers*

BOUQUETS, WREATHS, and BEDDING OUT  
PLANTS, ROSE TREES, TOMATO PLANTS

### Sunny Bank Nurseries

Brecon Road - Ystradgynlais



## D. WATKINS

FIREARMS  
DEALER

Agent for : Allcock's Fishing Tackle : B.S.A. Guns  
Parker-Hole Rods made to order : Repairs a Speciality

**The Cross, Ystradgynlais, Swansea**

## J. W. DAVIES & SON

*Cycle & Electrical Dealers & Repairers  
also Balsa Model Aircraft Specialists*

PANTYCELYN, BRECON ROAD  
YSTRADGYNLAIS, SWANSEA

Phone : Glantawe 2123

Phone : Pontardawe 3109

## G. A. NICHOLAS

*Bookseller, Stationer  
and General Dealer*

Ronson Stockist

Fountain Pens Repaired

Modern Library

68 Herbert St.,  
Pontardawe

44 Commercial St.,  
Ystalyfera

**Newbridge Library, Church Road,  
Ystradgynlais, Swansea**

## G. CONTI

Commercial Street  
YSTRADGYNLAIS  
SWANSEA

*High-Class  
Confectioner  
and  
Tobacconist*

ICES A SPECIALITY

## GWYNNE POWELL & SON

**Fruiterers, Fishmongers & Florists**

**For Your—FRESH SUPPLIES DAILY**

**ORDERS Also taken for :**

*Wreaths, Wedding Bouquets, etc.—at short notice*

**Duffryn Stores, Station Road, YSTRADGYNLAIS**

Telephone : GLANTAW 3269

## WOODLANDS SERVICE STATION AND CAFE

*All kinds of Motor Repairs &  
Services promptly attended to*

*For a really good cup of Tea  
Hot Luncheons etc., our Cafe  
is at your Service*

*Weddings and Parties Catered for*

**Proprietors : Mr. & Mrs. Tudor Sheen Evans**

**Ystalyfera • Swansea • Glamorgan**

*MAKE certain to visit . . .*

**"The Temperance"**

**YSTRADGYNLAIS**

*High Class Cafe Ice Cream Lounge Soda Fountain*

*Estab. 1902*

**WILLIAMS & SON**

## Classified Index to Advertisers

<b>Automobile Engineers.</b>	<i>Page</i>
T. Evans & Sons, Central Service Station, Ystradgynlais ..	30
J. L. James, Brook Motors, Caebont, Abercrave ..	27
<b>Bakers and Confectioners.</b>	
Glendale Bakeries, Yniscedwyn Road, Ystradgynlais ..	ii
<b>Blacksmiths.</b>	
Smithfield Forge, Ystradgynlais .. .. .	ie
<b>Bookseller, Stationer and General Dealer.</b>	
G. A. Nicholas, Newbridge Library, Church Road, Ystradgynlais	33
<b>Builders, Contractors and Funeral Directors.</b>	
Davies & Thomas, "Tan-y-Rhiw," Brecon Road, Ystradgynlais	29
Aneurin George, Commercial Street, Ystalyfera ..	30
H. C. Gunn & Sons, Ystradgynlais .. .. .	26
T. J. Williams & Sons, Gurnos Yard, Ystradgynlais ..	iii
<b>Butcher.</b>	
L. O. Francis, Cambrian Terrace, Brecon Road, Ystradgynlais	27
<b>Cafes and Confectioners.</b>	
Ann's Pantry, The Cross, Ystradgynlais .. .. .	31
"The Temperance," Ystradgynlais .. .. .	34
<b>Chemist.</b>	
John Glynne Davies, The Pharmacy, Abercrave ..	36
<b>Clock and Watch Manufacturers.</b>	
Ingersoll Ltd., The Anglo-Celtic Watch Factory, Ystradgynlais	11
Smiths English Clocks, Ltd., Ystradgynlais and London, N.W.2	1
<b>Coach Operators.</b>	
J. Jones & Sons, Cross Garage, Ystradgynlais .. .. .	ie
<b>Confectioner and Tobacconist.</b>	
G. Conti, Commercial Street, Ystradgynlais .. .. .	33
<b>Cycle and Electrical Dealers and Repairers.</b>	
J. W. Davies & Son, Pantycoelyn, Brecon Road, Ystradgynlais	33
<b>Drapers and Outfitters.</b>	
Anvil House, Ystradgynlais .. .. .	29
Martin L. Cowling, Bradford House, Ystradgynlais ..	30
Jenny's, Brecon Road (Near Astoria Cinema), Ystradgynlais ..	26
Spencer Jones .. .. .	27

## PHOTOGRAPHY

**T. J. DAVIES**

*Member of the Royal Photographic Society,  
Member of the Master Photographers Association*

### ● THE WEDDING SPECIALIST

*Portraits, Groups, Press, Commercial*

**MAES-Y-CWM, YSTRADGYNLAIS**

Classified Index to Advertisers—continued.

	<i>Page</i>
<b>Electricity Board.</b>	
South Wales Electricity Board, Brecon Road, Ystradgynlais ..	iii
<b>Firearms Dealer.</b>	
D. Watkins, The Cross, Ystradgynlais .. .. .	32
<b>Florist and Nurseryman.</b>	
E. J. Perkins, Sunny Bank Nurseries, Brecon Road, Ystradgynlais .. .. .	32
<b>Footwear Specialists.</b>	
James, 3, Peglers Buildings, Ystradgynlais .. .. .	32
<b>Fruiterer, Confectioner and Grocer.</b>	
L. Callaghan, Tawe Stores, Church Road, Ystradgynlais ..	28
<b>Fruiterers, Fishmongers and Florists.</b>	
Gwynne Powell & Son, Duffryn Stores, Station Road, Ystradgynlais .. .. .	34
<b>Grocer and Provision Merchant.</b>	
David John James, Central Stores, Abercrave .. .. .	29
<b>Hub Brake and Chain Manufacturers.</b>	
Perry Chain Company, Ltd., Tyseley, Birmingham .. .. .	2
<b>Ironmongers.</b>	
D. H. Williams & Sons, Station Road, Ystradgynlais .. .. .	31
<b>Newsagents, Stationers and Tobacconists.</b>	
Haydn Jones, Brecon Road, Abercrave .. .. .	28
"Siop Jim," The Square, Ystradgynlais .. .. .	26
<b>Photographer.</b>	
T. J. Davies, Maes-y-Cwm, Ystradgynlais .. .. .	35
<b>Service Station and Cafe.</b>	
Woodlands Service Station and Cafe, Ystalyfera .. .. .	34
<b>Watchmaker and Jeweller.</b>	
E. L. Williams, Station Road, Ystradgynlais .. .. .	31
<b>Wool Shop.</b>	
Mrs. M. Jones, Cynlais Wool Shop, Station Road, Ystradgynlais	28

***John Glynne Davies***

***Dispensing Chemist***

***The Pharmacy, Abercrave,  
Swansea***

Telephone : Glantawe 3212  
Telegrams : Wilson, Ystradgynlais



***T. J. Williams & Sons***

BUILDING and PUBLIC  
WORKS CONTRACTORS

*Gurnos Yard, Ystradgynlais  
Swansea*

MANUFACTURERS OF ALL KINDS OF JOINERY

Does **LESS WORK**  
and **MORE LEISURE**

*interest you?*

THEN VISIT  
YOUR ELECTRICITY SHOWROOM  
BRECON ROAD  
YSTRADGYNLAIS

THE SOUTH WALES ELECTRICITY BOARD

# J. JONES & SONS

---

*Motor Coach Operators*

---

**CROSS GARAGE**  
**YSTRADGYNLAIS - SWANSEA**

Telephone : GLANTawe 2137

## **SMITHFIELD FORGE** **YSTRADGYNLAIS**

*Blacksmiths for Five Generations*

**PRIZE WINNERS at**  
**BATH & WEST and Royal Shows**

---

**If you have a metal problem, please consult us.**  
**Personal attention with advice and estimates free**

---

**Proprietor and Manager**

**T. GLYNNE JONES**